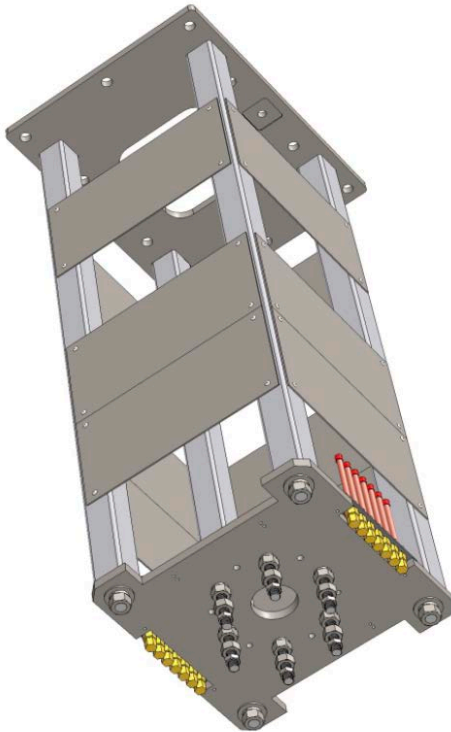


## Contractor's Summary for

### **IntegraMount™ 4.1 Superstructure**

For Single Mounted Medical Equipment Systems



## WARNING

This summary's dimensional and loading data must be used in preparing the site for the **IntegraMount™ Superstructure** installation. If these specifications are not used it may damage the products, the building or cause injury to personnel.

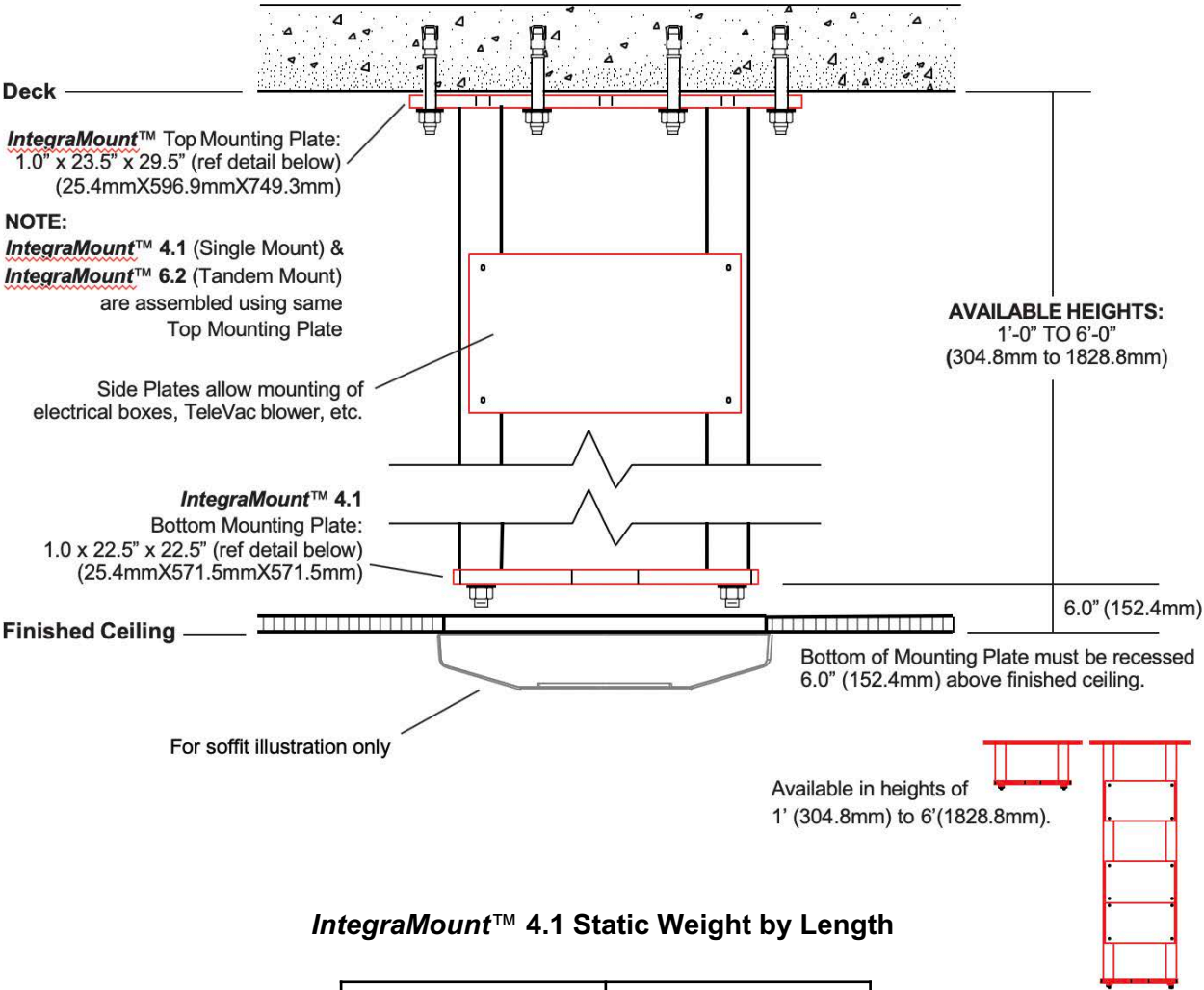
### SYSTEM DESCRIPTION

The **IntegraMount™ 4.1 Superstructure** is designed, engineered and manufactured to meet rigid design specifications. It is an adaptable system that may be ordered in a variety of heights ranging from 1' to 6' and will support overhead mounted equipment systems. The **IntegraMount™ 4.1 Superstructure** is designed for single equipment mounting applications. System comes pre-assembled and prepared for installation by contractor and/or customer designated contractor.

Supported Maximum Weight and Moment	
Weight	Moment
1,100 Lb / 498 Kg	5,650 Ft Lb / 7,660 N-m

# Summary for *IntegraMount*™ 4.1

## General Information

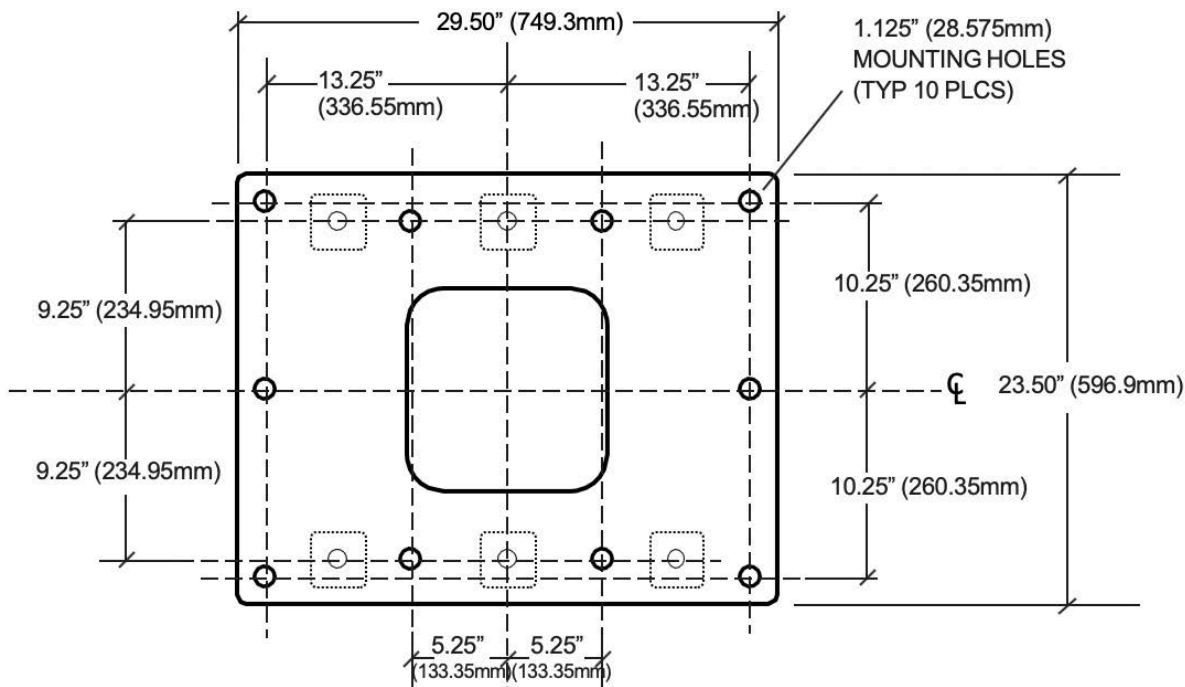


*IntegraMount*™ 4.1 Static Weight by Length

Length (in)	Weight (lbs)
12	301.78
24	322.46
36	375.22
48	427.98
60	448.66
72	501.42

Mounting Plates

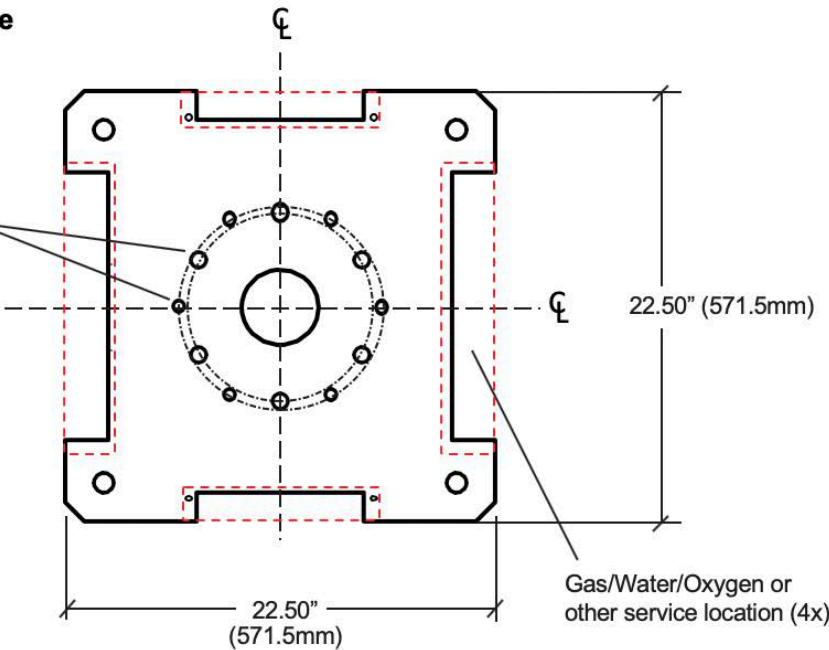
Top Mounting Plate



Bottom Mounting Plate  
(Typical Example)

**MOUNTING HOLE PATTERN(S)  
AND TAP DRILL SIZES  
AS SPECIFIED BY  
CUSTOMER / CONTRACTOR**

**NOTE:**  
Hardware and/or equipment  
mounting plate can also be  
provided as specified by  
OEM or contractor.

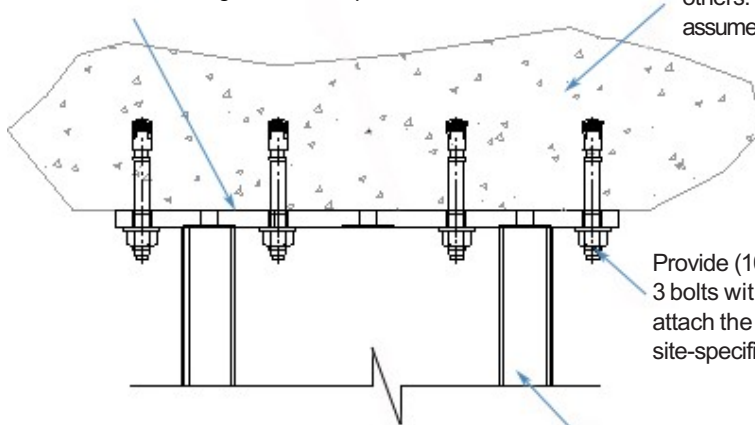


# Summary for *IntegraMount*™ 4.1

## Mounting Detail for Site Preparation

To use this detail, existing steel structure must provide **FULL SURFACE** bearing contact with the *IntegraMount* Top Plate

Site specific concrete structure to be verified for capacity by others. Anchor design capacity assumes 3000 PSI concrete

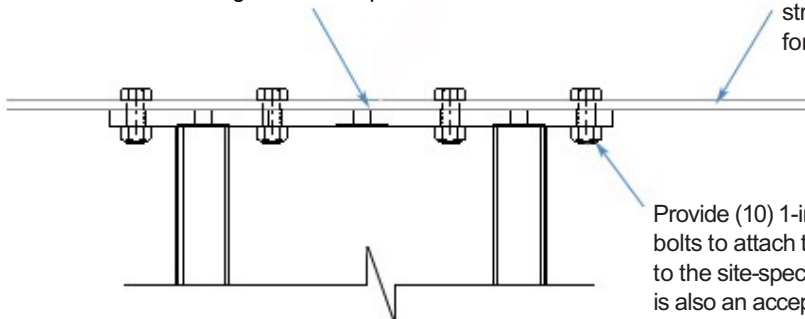


Provide (10) 1-in. 0 (25.4 mm) Hilti Kwik Bolt 3 bolts with 6-in. (152.4 mm) embedment to attach the *IntegraMount* Top Plate to the site-specific structural concrete

*IntegraMount* Compression Structures designed as pre-assembled, pre-tensioned assemblies with (4) columns for single mount applications and (6) columns for tandem mount applications

To use this detail, existing steel structure must provide **FULL SURFACE** bearing contact with the *IntegraMount* Top Plate

Site specific steel structure to be verified for capacity by others



Provide (10) 1-in. 0 (25.4 mm) A325-N bolts to attach the *IntegraMount* Top Plate to the site-specific structural steel (Welding is also an acceptable method, as per contractor's recommendations and specifications)

### IMSG is responsible for:

1. Providing a PE-certified ceiling structure and mounting instructions, designed, engineered and manufactured to meet rigid medical industry and IMSG Brand design specifications. Compression Structure to be shipped pre-assembled.

### Buyer or buyer's designee is responsible for:

1. Providing building structural detail drawings (interstitial height required).
2. Ensuring that the existing sub-structure and building deck to which the *IntegraMount* Superstructure is attached is able to withstand the loads imposed upon it by the equipment/products they are mounting.
3. Sub-structural and/or building deck work to prepare the installation site to accept IMSG brand structure.
4. All installation required to mount the *IntegraMount* as per its design specifications.

# Summary for *IntegraMount™* 4.1

## Accessory Mounting and Warning Labels

**⚠ WARNING**

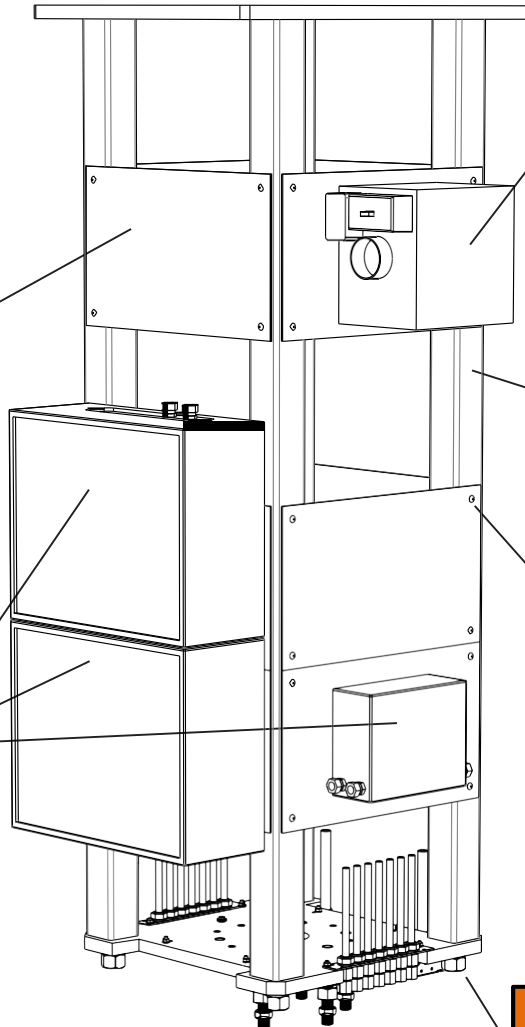
Installation must be in accordance of *IntegraMount™* specifications and to site prepared by contractor and/or engineer of record.

**Max Load:**  
**Wt: 1100lbs Moment: 5650ft-lbs**

**⚠ WARNING**

Do not drill more than 6 holes in any plate.  
Max Hole Size = .25" (6.35m)

Suggested electrical box mounting locations



Suggested mounting locations for other ancillary equipment

**⚠ WARNING**

Do not drill into any vertical supports

**⚠ WARNING**

Do not remove rivets

**⚠ WARNING**

Do not loosen or remove pre-tensioned nuts

### IMPORTANT CONTRACTOR NOTES

The *IntegraMount™* Superstructures are certified to meet a criteria to limit rotation to <.1 degree at all mounting locations, in all directions, at the bottom mounting plate according to the load limit design specifications listed in this summary. This is achieved when adequately installed with **FULL SURFACE** bearing contact to the top mounting plate.

***It is required that the contractor and their own professionals verify the structure, in which the IntegraMount Superstructure is mounted, meets the necessary structural requirements to install the IntegraMount, as well as any equipment and/or accessories they are installing directly to or on the IntegraMount.***